

# PowerKey User Manual

by Jamie Green

PowerKey designed by Amar Singh  
PowerKey Software by Richard Elmore  
User Interface and Graphics by Jamie Green  
Balloon Help by Beverlee Heiszler  
Moral Support by Alora Dunlap

## IMPORTANT SAFETY INSTRUCTIONS

When using your equipment, basic safety precautions should always be followed to reduce the risk of fire, electric shock and injury to persons, including the following:

1. Read and understand all instructions.
2. Follow all warnings and instructions marked on the product.
3. Unplug this product from the wall outlet before cleaning.
4. Do not allow anything to rest on the power cord. Do not locate this product where the cord will be abused by persons walking on it.
5. Do not overload wall outlets and extension cords, as this can result in the risk of fire or electric shock.
6. Unplug this product and refer servicing to qualified service personnel under the following conditions: when the power supply cord or plug is damaged or frayed, if liquid has been spilled into the product, if the product has been exposed to rain or water, or if the product has been dropped or damaged.

## SAVE THESE INSTRUCTIONS

## Service Requirements

In the event of equipment malfunction, all repairs should be performed by our Company or an authorized agent. It is the responsibility of users requiring service to report the need for service to our Company or to one of our authorized agents. Service can be obtained at Sophisticated Circuits, Inc., Bothell, WA, 425-485-7979.

## FCC Statement

This equipment has been tested and found to comply with the limits for a Class B digital device, pursuant to Part 15 of the FCC Rules. These limits are designed to provide reasonable protection against harmful interference in a residential installation. This equipment generates, uses and can radiate radio frequency energy and, if not installed and used in accordance with the instructions, may cause harmful interference to radio communications. However, there is no guarantee that interference will not occur in a particular installation. If this equipment does cause harmful interference to radio or television reception, which can be determined by turning the equipment off and on, the user is encouraged to try to correct the interference by one or more of the following measures:

- Reorient or relocate the receiving antenna.
- Increase the separation between the equipment and receiver.
- Connect the equipment into an outlet on a circuit different from that to which the receiver is connected.
- Consult the dealer or an experienced radio/TV technician for help.

Shielded cables and I/O cords must be used for this equipment to comply with the relevant FCC regulations.

Changes or modifications not expressly approved in writing by Sophisticated Circuits, Inc. may void the user's authority to operate this equipment.

## Copyright Notice

The PowerKey manual, program, product design and design concepts are copyrighted, with all rights reserved to Sophisticated Circuits, Inc. Your rights are subject to the copyright laws of the United States of America. Under the copyright laws, this manual may not be copied, in whole or part, including translation to another language or format, without the express written consent of Sophisticated Circuits, Inc.

## Trademarks

PowerKey and PowerPad are registered trademarks of Sophisticated Circuits, Inc.

Apple, AppleScript, Macintosh, Mac, PowerBook and Power Macintosh are registered trademarks, and Balloon Help, Finder and System 7 are trademarks of Apple Computer, Inc.

PowerPC is a trademark of International Business Machines Corporation.

Frontier is a trademark of UserLand Software, Inc.

QuickKeys is a trademark of CE Software, Inc.



# Contents

<b>Introduction</b>	<b>7</b>
System Requirements	7
What's in the Box	8
Using This Manual	8
<b>Installing PowerKey</b>	<b>9</b>
Hardware Installation	10
Preparing for Installation	10
Connecting the Power Cords	10
Connecting the ADB Cables	11
Turning On Your System	12
Software Installation	13
<b>Using PowerKey</b>	<b>15</b>
Starting Up the System	16
Shutting Down the System	16
Scheduled Events	17
The PowerKey Schedule	18
Creating an Event	20
A Nightly Shut Down Event	23
<b>Reference</b>	<b>27</b>
Software Components	28
PowerKey Editor	29
Schedule Windows	29

PowerKey Editor Menus	30
File Menu	30
Edit Menu	30
Schedule Menu	31
Importing and Exporting	33
Hardware Setup	35
Preferences	36
The Event Editor	37
Event Triggers	39
Time Triggers	39
System Triggers	42
Trigger Qualifiers	44
Event Actions	48
<b>Appendices</b>	<b>55</b>
1. Default Schedules	56
Creating a Default Schedule File	56
Using a Default Schedule File	57
2. Troubleshooting	58
3. How To Reach Us	60
<b>Index</b>	<b>61</b>



# Chapter 1

## Introduction

Thank you for purchasing PowerKey®!

With PowerKey, you can start up your computer and all of your peripherals with a single keystroke. You can set up timed events to automate many day-to-day tasks, for example to turn on your computer before you get to work or run nightly unattended backups.

### System Requirements

PowerKey works with any desktop Macintosh or compatible except the original Mac® and Mac Plus (because they do not have an ADB port). It works with any Apple keyboard, and most third-party keyboards.

The PowerKey software requires System 7™ or later, and runs in native PowerPC® mode on the Power Macintosh. It supports Balloon Help™, Apple Events and AppleScript®.

## What's in the Box

The PowerKey package includes the following:

- **PowerKey** unit
- **ADB Cable** for connecting PowerKey to your computer and keyboard
- **Software disk** for controlling PowerKey
- **This manual**
- Postage-paid **registration card**

If you're missing any of these items, please notify your supplier.

## Using This Manual

We recommend that you read this manual as follows:

1. Carefully follow the instructions in Chapter 2, *Installing PowerKey*.
2. Skim the first part of Chapter 3, *Using PowerKey*.

If you want to use PowerKey's advanced Scheduling features:

3. Follow along with the *Creating an Event* tutorial in Chapter 3.
4. Skim Chapter 4, *Reference*, to learn the details of the Scheduling features.

As you read the manual, you will encounter symbols next to some paragraphs:



*This symbol denotes a paragraph that contains important information regarding the current topic. Be sure to read these notes carefully.*



*This symbol denotes a paragraph that contains a handy tip, or an idea for using a feature.*



# Chapter 2

## Installing PowerKey

PowerKey consists of two primary components, hardware and software. The hardware unit controls the outlets and keeps track of time when the computer is turned off. The software organizes the scheduled events and programs the hardware with the next scheduled startup.



*In order to use PowerKey, you must install both the hardware and software.*

Hardware Installation	10
Preparing for Installation	10
Connecting the Power Cords	10
Connecting the ADB Cables	11
Software Installation	13

# Hardware Installation

## Preparing for Installation

### Determine your computer's switch type

With your computer off, press the “Power On” key (usually found at the top or upper right corner of your keyboard). If your computer starts up it has **Soft Power**, otherwise it has **Hard Power**. This information will be important later when you are connecting your computer's power cords to your PowerKey.



If your computer started up in the above test (i.e. it has Soft Power), shut it down before continuing.

### Unplug your system

1. Make sure that all the power switches on your Macintosh and peripherals are turned off.
2. Disconnect the power cords for your Macintosh and peripherals from the wall outlet or power strip.
3. Disconnect the keyboard cable from the Apple Desktop Bus (“ADB”) port on the back of your computer. The ADB port is labelled with the icon shown at the right.



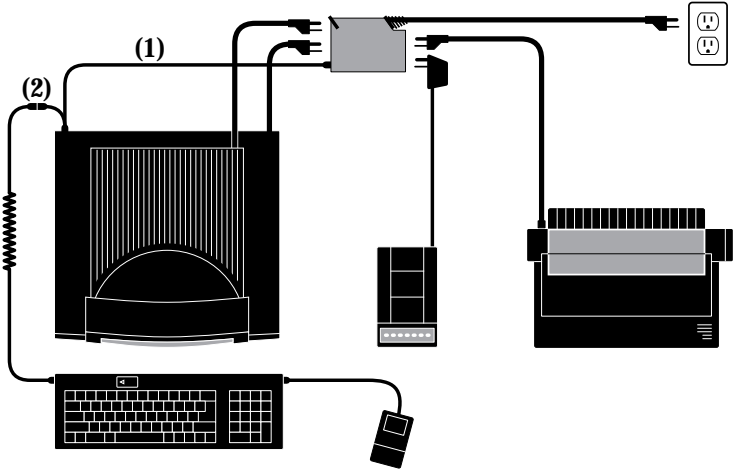
## Connecting the Power Cords

1. Plug the power cord for PowerKey into the wall outlet.
2. Connect the power cord for your computer as follows:
  - **If your computer has Soft Power**, you should plug it into a wall outlet or unswitched power strip.
  - **If your computer has Hard Power**, you should plug it into PowerKey.

3. Plug the power cords for your peripherals into the other outlets of PowerKey.

## Connecting the ADB Cables

Refer to this diagram to ensure that your PowerKey is connected properly.



*The Power Mac 6100 shown above has Hard Power, so it is plugged into one of PowerKey's outlets. A computer with Soft Power would be plugged into a wall outlet or unswitched power strip.*

1. Plug the single end of the PowerKey ADB Cable (see note 1 in the diagram above) into the ADB Port on PowerKey.
2. Plug the branching end of the PowerKey ADB Cable into the ADB port on the back of your computer.
3. Plug the keyboard cable into the branching connector of the PowerKey ADB Cable (see note 2 in the diagram above). If you have other ADB devices, they should be connected in a "chain," with one end of the chain joining to the branching connector.



*The keyboard **must** be connected to the **branching** connector on the PowerKey ADB Cable in order for PowerKey to work.*

## Turning On Your System

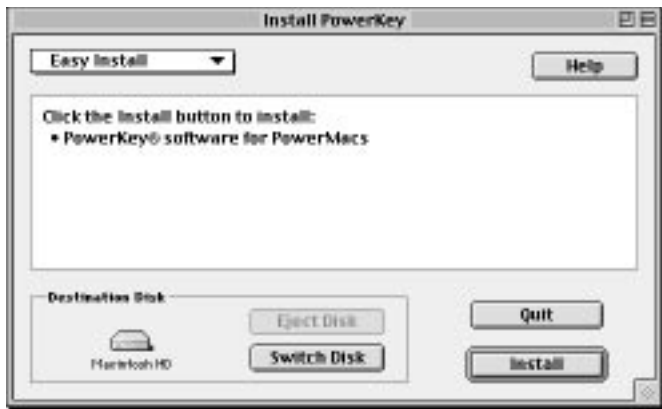
1. Turn on the power switches on your computer (if it has Hard Power) and peripherals.
2. Press the “Power On” key on the keyboard. PowerKey Pro will turn on its outlets, and your entire system will start up!

As you can see, the PowerKey Pro hardware can start up the system. The PowerKey software is required to shut it down. The next section shows you how to install the software and configure it for use.

# Software Installation

## Open the Installer

1. Insert the PowerKey disk into your floppy drive. The disk's window will appear.
2. Double-click the icon labelled "Install PowerKey."  
The Installer window will open.



## Install the software

3. Make sure your startup disk is shown in the *Destination Disk* panel. If it is not, click the *Switch Disk* button until it is shown.
4. Click *Install*. The Installer will ask if it can quit any open applications before it begins. Make sure you don't have any unsaved documents, then click *Continue*.

When the installation is complete, the Installer will restart your computer.

That's all there is to it! The next chapter shows you how to use your PowerKey, and offers a brief tutorial on some of its more powerful features.



# Chapter 3

## Using PowerKey

PowerKey is ready to use as soon as you install both the hardware and software. You can easily use it to start up and shut down your entire system without further setup.

PowerKey also has advanced scheduling features that let you automate starting up and shutting down at any time of the day or night.

Starting Up the System	16
Shutting Down the System	16
Scheduled Events	17
The PowerKey Schedule	18
Creating an Event	20
A Nightly Shut Down Event	23

# Starting Up the System

PowerKey watches the “Power On” key on your computer’s keyboard when the computer is off. To start up your computer system, simply press this key. Your computer and all peripherals plugged into your PowerKey will turn on, and your computer will start up normally.

# Shutting Down the System

To shut down your computer, select “Shut Down” from the Finder’s *Special* menu. The PowerKey software will allow the system software to shut down normally; PowerKey will then turn off the computer and all peripherals plugged into it automatically.



*Some newer models of Macintosh can also be shut down by pressing the “Power On” key while the computer is turned on.*

If this is all you will be using PowerKey for, you don’t need to read any further. But if you want to use PowerKey’s advanced Scheduled Event features, read on.



# Scheduled Events

PowerKey can do much more than simply start up and shut down your computer. It includes a sophisticated schedule of **Events** which can automate system startup and shutdown, and control your system in a variety of ways.

An Event consists of two parts, the **Trigger** (when the Event will be executed) and the **Actions** (what the Event will do). The Trigger can also include **Qualifiers**, which restrict when the Event will execute (for example, to turn on your computer in the morning, but not when you're away on vacation).

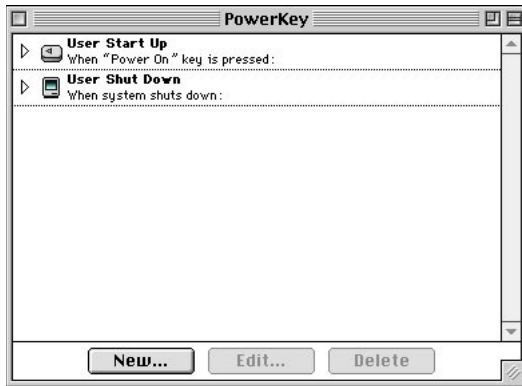
The PowerKey Schedule keeps a list of your Event Triggers, and watches for them to "activate." When a Trigger activates, it performs the list of Actions for that Event.

Note that several Events can have the same type of Trigger. You can set up several Events with the same type of Trigger but different Qualifiers, to make the Events behave differently at different times of the day or week.

The next few pages take you step by step through creating a pair of example Events, showing you how to customize your PowerKey setup and make use of its advanced features. Chapter 4 contains a complete reference, describing each type of Trigger, Qualifier and Action.

## The PowerKey Schedule

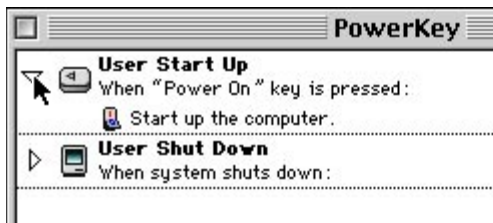
PowerKey Schedules are created using the PowerKey Editor application. If you followed the standard installation instructions, PowerKey Editor can be found in your *Apple* menu. Select it from this menu, and the following window will appear.



You'll notice that there are already two Events in the Schedule, entitled "User Start Up" and "User Shut Down." Once you've learned how to edit Events, you can customize these in any way you like.

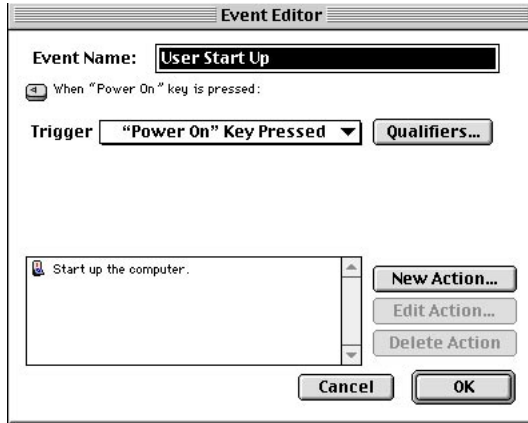
The top line of an Event shows its name. The next line is an English description of its Trigger (when the Event will happen). The icon to the left of each Event shows the Trigger type at a glance.

Each Event in the Schedule also has a small triangle at its left side. Click on the triangle for the Event named "User Start Up." An additional line will appear beneath it.



When the arrow in an Event is turned down, the Event's Actions (what the Event will do) are shown. In this case, the only Action is to start up the system.

Double-click on the Event named "User Start Up" (or select it and click the *Edit...* button). The Event Editor will appear.



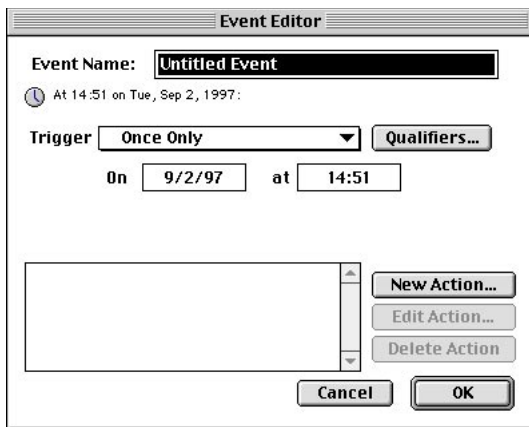
As you can see, the Event Editor shows the same information as the Schedule window, plus controls for changing it. We don't need to modify this Event now, so click the *Cancel* button to close the Event Editor.

## Creating an Event

For this example, let's assume that you want to automatically turn on your computer before you arrive for work each morning. To do this, we'll create a new Event which turns on your computer at 8:55 each weekday morning.

### Create a new Event

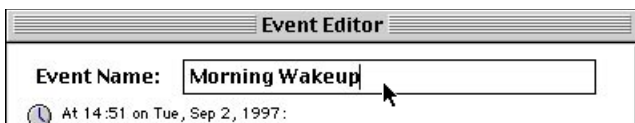
1. To create a new Event, click the *New...* button in the Schedule window or select "New Event..." from the *Schedule* menu. The Event Editor will appear, showing a blank Event.



### Name the Event

You may choose any name you wish for an Event, up to 31 characters long. Event names have no special meaning; they are simply a description you can give an Event to help you understand what it's doing.

2. For this example, type "Morning Wakeup" into the *Event Name* field.



## Select the Trigger type

The Trigger type is selected from the pop-up menu below the English description of the Trigger. There are several types of Triggers; these are described in detail in the next chapter.



3. We want this Event to be executed every weekday morning, so select “Days of Week” from the *Trigger* pop-up menu.

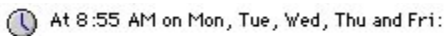
## Set the days and time

Some fields will appear in the blank area below the menu, allowing you to choose when the Trigger will activate.



4. We want this Event to be executed on weekdays, so check the boxes marked *M*, *T*, *W*, *T* and *F* (if they are not already checked).
5. To set the time for a Trigger, click in the time field next to the day check boxes. The portion of the time you clicked on is highlighted, and a pair of arrow buttons appears. You can change the highlighted value by clicking on these arrows, or by pressing the up and down arrow keys on your keyboard, or by typing in the desired values with the number keys. Click on the next value to edit it, or press the tab key or left and right arrow keys.

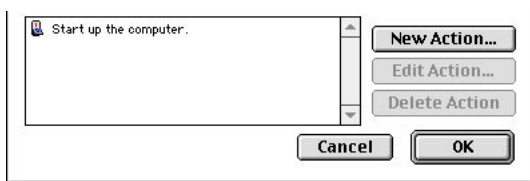
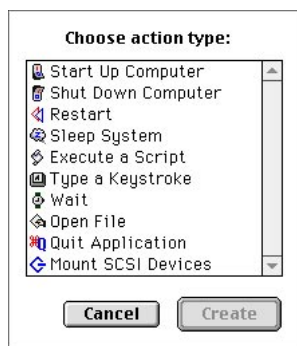
You'll notice that the English description above the *Trigger* pop-up menu is updated as you make changes to the Trigger. This helps you make sure the Event will be executed when you intend, and helps you catch mistakes.



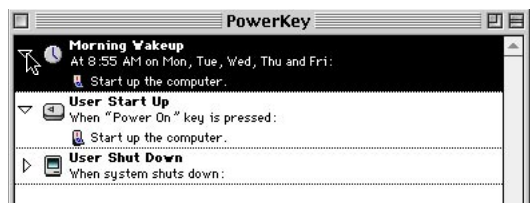
## Create a new Action

6. Click the *New Action...* button. A dialog box will appear.

We want to start up the system, so choose “Start Up Computer” from the list. Click *Create* (or double-click on the “Start Up Computer” line). The Start Up Computer Action will appear in the Action List.



7. Click *OK* to save your new Event. It will appear at the top of the Schedule window. Click the small triangle to show the Action, and double-check to make sure all the information is correct. Your Event is now ready to use!



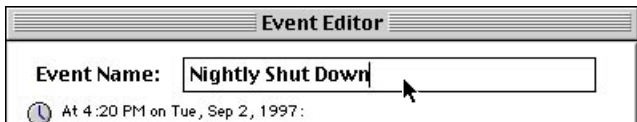
## A Nightly Shut Down Event

This Event shows some of the more powerful abilities of the PowerKey software. In case you forget to turn your computer off before you go home from work, this Event will automatically do it for you.

We only want the computer to shut down if we aren't still using it, so this Event will use a When System Is Idle Trigger. We also don't want it to shut down during the daytime, so we'll add a Time Range Qualifier.

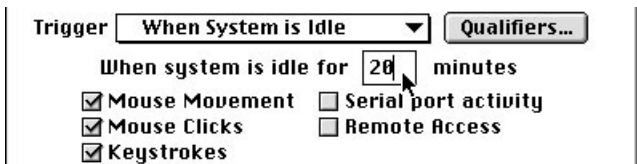
### Create an Event

1. Click the *New...* button in the Schedule window, and name the new Event "Nightly Shut Down".



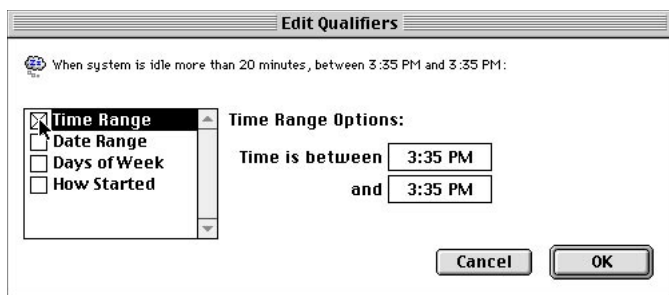
### Create the Trigger

2. Select "When System is Idle" from the *Trigger* menu. Type "20" into the *Minutes* field. Make sure the *Mouse Movement*, *Mouse Clicks* and *Keystrokes* boxes are checked. This tells PowerKey Pro to watch for all those activities.



## Create the Qualifier

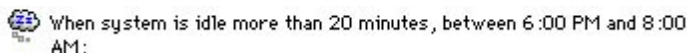
3. Click the *Qualifiers...* button. The Qualifier Editor will appear.



We want to limit this Event to execute only after business hours, so check the *Time Range* box.

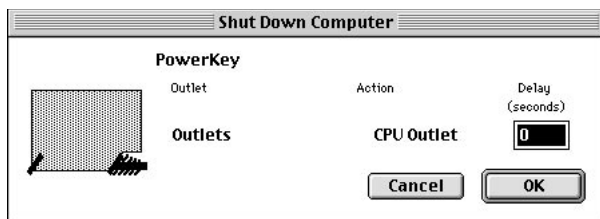
4. Set the Time Range Options to between 6:00 PM and 8:00 AM.

Click *OK*. The Trigger text will now show the Qualifier information.



## Create the Action

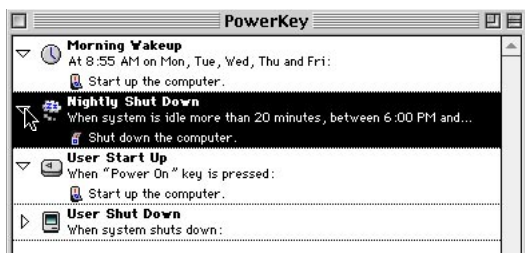
5. Click the *New Action...* button, and select “Shut Down Computer” from the list. Another dialog box will appear.



This dialog box allows you to set a delay before PowerKey will turn off its outlets. For most purposes, you will leave this at 0.



6. Click *OK*, and the Action will appear in the Action List. Click *OK* again to save the Event.





# Chapter 4

## Reference

This chapter contains detailed information about the PowerKey software.

Software Components	28
PowerKey Editor	29
Schedule Windows	29
PowerKey Editor Menus	30
File Menu	30
Edit Menu	30
Schedule Menu	31
Importing and Exporting	33
Hardware Setup	35
Preferences	36
The Event Editor	37
Event Triggers	39
Time Triggers	39
System Triggers	42
Trigger Qualifiers	44
Event Actions	48

# Software Components

When you install the PowerKey software, the following items will be placed on your hard disk:

## PowerKey Extension



This extension is located in the Extensions folder in your System Folder. This is the heart of the PowerKey software. It runs in the background, keeping track of your Schedule and communicating with the PowerKey hardware. It watches for each Event's Trigger to activate and executes the Actions when it does.

## PowerKey Editor



This application is normally installed in your Apple Menu Items folder, but it may be moved anywhere you find convenient. It lets you configure your PowerKey hardware and software, and create and edit Events. The rest of this chapter shows you how to use all the features of the PowerKey Editor.

## PowerKey Folder



This folder is located in your system's Preferences folder. It contains the PowerKey Preferences file, as well as a Schedule file for each PowerKey connected to your computer. If you use any External Actions, they will also be stored here.



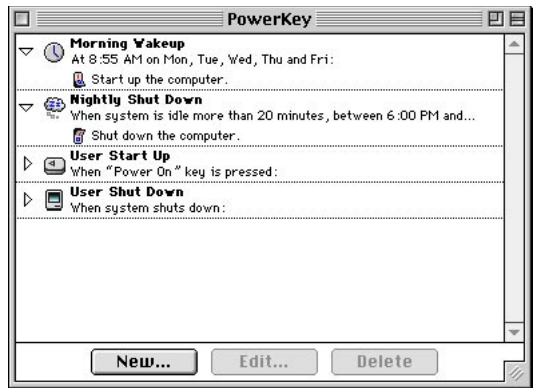
*There are also several "extras" on the PowerKey disk that are not installed by the installer. They contain information and examples of how to use PowerKey with Retrospect, how to write External Actions, etc. They are found in the "PowerKey Extras" folder on the master disk.*

# PowerKey Editor

The PowerKey Editor application allows you to configure your PowerKey and create scheduled Events. Normally, this application can be found under the *Apple* menu, but it may be placed in any location you find convenient.

## Schedule Windows

When you open the PowerKey Editor application, the current Schedule for each PowerKey connected to your computer is displayed in a separate window. Each Schedule is made up of several Events.



### Spin triangles

You can expand or collapse each Event in a Schedule (to show or hide its Actions) by clicking on the small triangle to the left of the Event.



*You can also expand or collapse all Events in a Schedule by holding down the Option key when you click on a triangle.*

### Event buttons

The buttons at the bottom of the Schedule window operate just like the "New Event," "Edit Event" and "Delete Event" menu items in the *Schedule* menu. (You can also edit an Event by double-clicking on it.) See the *Schedule Menu* section later in this chapter for more information.

# PowerKey Editor Menus

## File Menu

### Import Schedule..., Export Schedule...

These commands allow you to save Events on your hard disk, and copy them back at a later date. See the *Importing and Exporting* section later in this chapter for more information.

File	
Import Schedule...	
Export Schedule...	
Page Setup...	
Print...	⌘P
Quit	⌘Q

### Page Setup...

This command displays a standard Page Setup dialog box, allowing you to change printer settings.

### Print... (⌘-P)

This command prints the contents of the Schedule window.

### Quit (⌘-Q)

This command quits the PowerKey Editor application.

## Edit Menu

### Undo (⌘-Z), Cut (⌘-X), Copy (⌘-C), Paste (⌘-V), Clear, Select All

These are the standard clipboard editing commands, as found in many Mac applications. You can cut, copy and paste text in any of the dialog boxes. You can also cut, copy and paste Events in Schedule windows and Actions in Action Lists.

Edit	
Undo	⌘Z
Cut	⌘X
Copy	⌘C
Paste	⌘V
Clear	
Select All	⌘A
Hardware Setup...	
Preferences...	

## Hardware Setup...

This command displays the Hardware Setup dialog box. See the *Hardware Setup* section later in this chapter for more information.

## Preferences...

This command displays the Preferences dialog box. See the *Preferences* section later in this chapter for more information.

# Schedule Menu

## New Event... (⌘-N)

This command creates a new Event in the Schedule and opens the Event Editor dialog box. See the *Event Editor* section later in this chapter for more information.



## Edit Event...

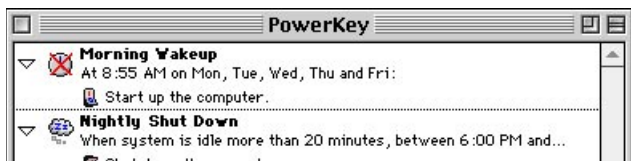
This command opens the Event Editor dialog box for the selected Event in the Schedule window. See the *Event Editor* section later in this chapter for more information.

## Delete Event

This command removes the selected Event in the Schedule window.

## Suspend Event/Resume Event

This command allows you to disable a selected Event. A disabled Event will appear with an 'X' over it, and will not be executed until you select "Resume Event."



## Execute Event

This command immediately executes the selected Event in the Schedule window. The Trigger and Qualifiers are ignored, and all Actions are performed in sequence. This command is useful for testing Events to make sure they operate as desired.

## PowerKey units

At the bottom of the *Schedule* menu is a list of all PowerKey units connected to your computer. Selecting one of these items opens the Schedule window for that unit. If the window is already open, it is brought to the front.



*Only one PowerKey can be connected to a single computer, but you can connect a PowerKey and one or more PowerKey Pros to a computer. See the PowerKey Pro User's Manual for more information.*



# Importing and Exporting

The “Import Schedule...” and “Export Schedule...” commands in the *File* menu allow you to save Events to a disk file, and copy them back into the Schedule at a later date.



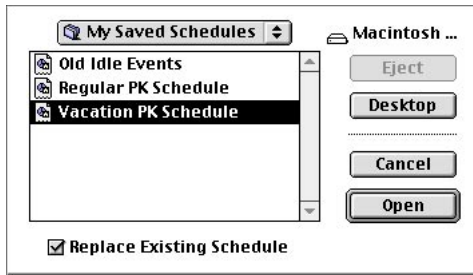
*It's a good idea to export your Schedule once you have it set up the way you like it. If you make changes or your system gets corrupted, you can import the saved file to restore your setup.*



*If you need to create identical schedules on multiple Systems, you can also use PowerKey's ability to use default Schedule files. See Appendix 1, Default Schedules, for more information.*

## Import Schedule...

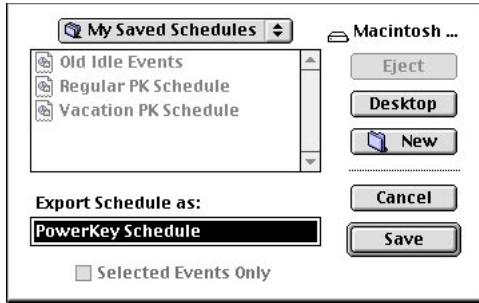
This command copies the Events in a disk file (created by the “Export Schedule...” command) into the frontmost Schedule window. A standard Open dialog box will appear, allowing you to select a Schedule file.



If the *Replace Existing Schedule* box is checked, all of the Events in the frontmost Schedule window will be removed, and replaced by the contents of the imported document. If it is unchecked, the Events in the imported document will be added to the Events in the frontmost Schedule window.

## Export Schedule...

This command copies the Events in the frontmost Schedule window into a new disk file. A standard Save dialog box will appear, allowing you to name the Schedule file and place it on your disk.



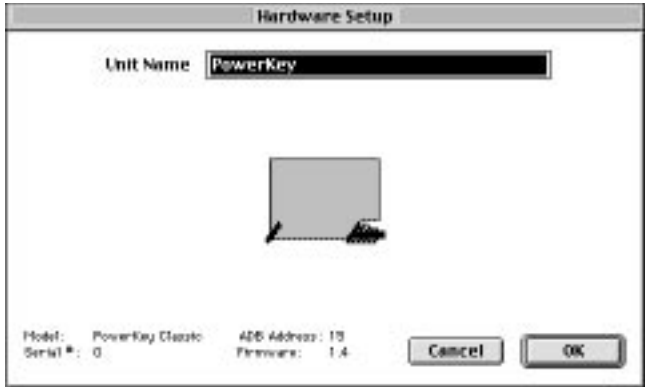
If the *Selected Events Only* box is checked, only the Events you select in the Schedule window will be copied to the file. If it is unchecked, all the Events in the Schedule window will be copied.



*You can shift-click or command-click Events in the Schedule window to select more than one for exporting.*

# Hardware Setup

When you select “Hardware Setup...” from the *Edit* menu, the Hardware Setup dialog box for the frontmost Schedule window is displayed. This feature is designed primarily to work with PowerKey Pro, but some features work with PowerKey.



## Unit Name

This field allows you to change the name of your PowerKey. This is the name that is used as the title bar of the unit's Schedule window and in the *Schedule* menu. It can be up to 31 characters long.

## Technical info

The model, firmware version and ADB address of your PowerKey are shown at the bottom of this dialog box. This information is primarily useful for troubleshooting.

# Preferences

When you select “Preferences...” from the *Edit* menu, the Preferences dialog box is displayed.

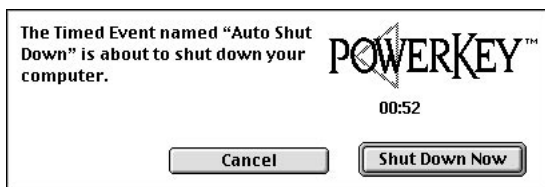


## Show startup icon

If this option is checked, the PowerKey software will display an icon at the bottom of your computer when you start up, to let you know it's loading.

## Warn before Scheduled Shut Down

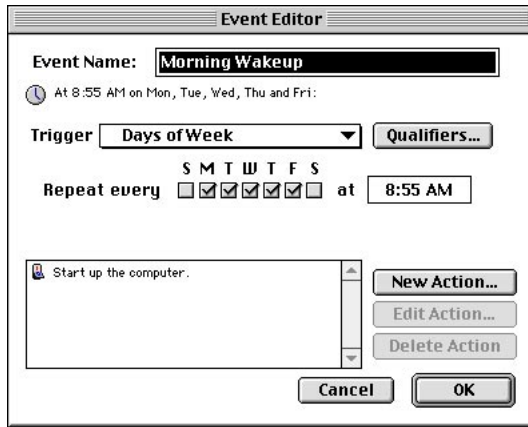
If this option is checked, a warning dialog box will appear whenever a scheduled Event is about to shut down your computer. The computer will also beep periodically in case you are away from the monitor.



The dialog box will count down from one minute. When it reaches 00:00, the Event will shut down the computer. Click *Cancel* if you do not wish to shut down, or *Shut Down Now* if you wish to skip the rest of the countdown period.

# The Event Editor

When you create a new Event or open an existing one, the Event Editor dialog box is displayed.



## Event Name

The *Event Name* is simply a description you can give to an Event. It will appear on the top line of the Event's entry in the Schedule window. To change the name of an Event, type into the editing box at the top of the Event Editor.

## Trigger text

Below the *Event Name* field is an English description of the Trigger, accompanied by any Qualifiers you may have set up. This description lets you see at a glance exactly when your Event will be executed.

## Trigger

Choose an item from this pop-up menu to select the Trigger for an Event. Every PowerKey Event starts when its Trigger activates. There are several different kinds of Triggers, in two major categories: *Time Triggers* and *System Triggers*.



For most Trigger types, some parameters will appear below the pop-up menu; you can change the values of these parameters to set up the Trigger to activate at the appropriate times. See the *Event Triggers* section later in this chapter for more information.

### Qualifiers...

Click this button to display the Qualifier Editor dialog box. Qualifiers give you more control over a Trigger, by restricting it to activate only under certain conditions. See the *Trigger Qualifiers* section later in this chapter for more information.

### Action list

When an Event's Trigger activates, the Event will perform its list of Actions, as shown at the bottom part of the Event Editor. Each Action will be performed in the order it appears in the list. You can change the order in which the Actions will be performed by dragging them up and down in the list.

### New Action...

Click this button to create a new Action. A dialog box will appear asking you which type of Action you wish to create, followed by the Action Editor for the selected type of Action. See the *Event Actions* section later in this chapter for more information.

### Edit Action...

Click this button (or double-click on the Action) to edit a selected Action. The Action Editor for the selected type of Action will open.

### Delete Action

Click this button to delete a selected Action.

### OK, Cancel

Click one of these buttons to close the Event Editor. The *OK* button will save any changes you've made to the Event, and the *Cancel* button will discard any changes.

# Event Triggers

There are two major categories of Triggers: *Time Triggers* and *System Triggers*. Time Triggers activate at specified times, and are primarily used for creating automatic or repeating Events. System Triggers activate when something happens on the computer.

## Time Triggers

### Once Only



This Trigger activates at a specified date and time. After the Actions are executed, the Event is removed from the Schedule. For example, you may use this Trigger to run a script which will send a file to a colleague at a prearranged time.

On   at

To set the date and time for the Event, click on the numbers in the time and date boxes, and either type in the desired values or change them with the arrow buttons. You can also use the arrow keys on the keyboard to move through and change values.

### Repeating



This Trigger activates at a specified time, and repeats at a chosen interval. For example, you may use this Trigger to run your backup program every other week.

Repeat every     
Starting on  at

To set the repeating interval, type a number into the editing box, and select the desired unit of time from the pop-up menu. You can choose between Minutes, Hours, Days and Weeks.

To set the starting date and time for the Event, click on the numbers in the time and date boxes, and either type in the desired values or change them with the arrow buttons. You can also use the arrow keys on the keyboard to move through and change values.



*By default, the starting time for a new Repeating Trigger is one hour in the future. Be sure to set this value appropriately for the Event you are creating.*

## Days of Week



This Trigger activates at a specified time on one or more days of every week. For example, you may use this Trigger to start up your system before you get to work each day.

Repeat every **S M T W T F S**  
       at **8:55 AM**

To set the days of the week, click the check boxes corresponding to the desired days. To set the time, click on the numbers in the time and date boxes, and either type in the desired values or change them with the arrow buttons. You can also use the arrow keys on the keyboard to move through and change values.

## Day of Month



This Trigger activates at a specified time on one day every month. For example, you may use this Trigger to execute a script which will run a sales report on the fourth Monday of each month.

Repeat on the **4** **Monday**   
of each month at **3:00 PM**

To set the day of the month for the Event, type the desired number into the editing box, and select a day from the pop-up menu. You can choose between “Day” (which means “activate on the 4th of every month”) and the days of the week (which means “activate on the fourth Monday of every month”).





*If the day chosen does not exist in a given month (for example, the 30th of February), the Trigger will not activate that month.*



*You can create Day of Month Triggers to count from the end of the month by using negative numbers. For example, putting “-2” in the example above means “activate on the second to last Monday of every month.”*

To set the time, click on the numbers in the time and date boxes, and either type in the desired values or change them with the arrow buttons. You can also use the arrow keys on the keyboard to move through and change values.

# System Triggers

## “Power On” Key Pressed



This Trigger activates whenever you press the “Power On” key on your computer’s keyboard. Use this Trigger to start up your system.



*No matter which Actions you use with this Trigger, PowerKey will turn on your computer. You may add other Actions to open documents or run AppleScripts.*



*This Trigger will activate only while the computer is off. If you press the “Power On” key while the computer is running, no “Power On” Key Trigger will activate. (However, on some Macs, pressing this key will ask if you wish to shut down. If you do, this will cause a Shut Down Trigger to activate.)*

## When Hot Key Pressed



This Trigger activates whenever a certain key combination (“hot key”) is pressed on the keyboard. For example, you may use this Trigger to open your e-mail application when you press ⌘-option-M.

**When keystroke is pressed:** A rectangular box containing the symbols for the Command key (⌘), the Option key (⌥), and the letter M.

To select the keystroke, click on the “Keystroke” text box, and type the desired key combination.



*Be careful not to use a keystroke for a Hot Key Event that is used by an application (for example, ⌘-Q).*



*This feature works well with the function keys on the top row of an extended keyboard.*

## When System is Idle



This Trigger activates whenever the system is “idle” (i.e. you are not using it) for a selected period of time. For example, you may use this Trigger to put your computer to sleep when you have not been using your system for 10 minutes.

When system is idle for  minutes

- |                                                    |                                               |
|----------------------------------------------------|-----------------------------------------------|
| <input checked="" type="checkbox"/> Mouse Movement | <input type="checkbox"/> Serial port activity |
| <input checked="" type="checkbox"/> Mouse Clicks   | <input type="checkbox"/> Remote Access        |
| <input checked="" type="checkbox"/> Keystrokes     |                                               |

To select how long the system must be idle before a System Idle Trigger activates, type the desired number of minutes into the text box.

You can customize which types of activities should be monitored. For example, you might wish your monitor to be turned off even if the modem is in use. To choose which types of activities should be monitored, check the desired boxes.



*The “Serial port activity” check box only works with applications that use the Mac’s standard serial driver. It will not be able to detect activity with any program which installs a custom driver. If you have problems using this feature, contact your software manufacturer to see if an updated version is available.*



*The “Remote Access” check box only works with Apple Remote Access. If you are using another program, for example Timbuktu, check the “Serial port activity” box instead.*

## At Shut Down

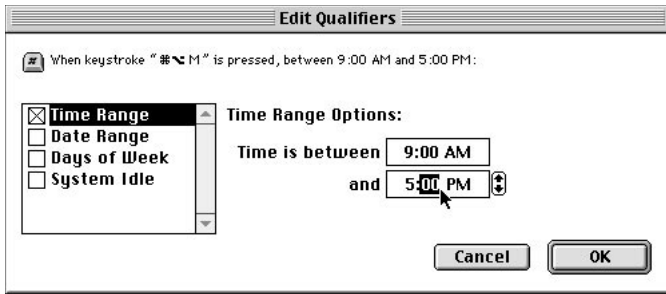


This Trigger activates whenever you select “Shut Down” from the Finder’s *Special* menu, or when another application (such as Retrospect) tells the computer to shut down. It also activates on newer Macs when you shut down by pressing the “Power On” key. Use this Trigger to turn your computer and peripherals off when you select “Shut Down”.

# Trigger Qualifiers

Qualifiers give you more control over a Trigger, by restricting it to activate only under certain conditions. For example, you can add a Qualifier to a Phone Ring Trigger that will turn on your computer during the day, but not in the evening. A Trigger will only activate if **all** of its Qualifiers are true.

To set up Qualifiers for an Event, first double-click on it to open the Event Editor. Click the *Qualifiers...* button to display the Qualifier Editor.



At the top of this window is the English description of the entire Trigger. This description will change as you add Qualifiers. At the left of the window is the list of possible Qualifiers; select an item in this list to edit that Qualifier.



*Not all Qualifiers are available with all Triggers. Qualifiers that are redundant or do not fit with a Trigger (such as a “System Idle” Qualifier with a “When System is Idle” Trigger) do not appear in this list.*

Check the box next to each Qualifier to enable it; its options will appear in the area to the right of the list. Uncheck it to disable it.



*You can also double-click on a Qualifier to turn it on or off.*

If a Qualifier is unchecked, its options appear dim. You can only edit a Qualifier if it is checked.

You can use one, several or all Qualifiers in any combination. This enables you to set up complex Triggers; for example, you can create an Event which will shut down your computer when you're not using it (with a When System Is Idle Trigger), but only after business hours (with a Time Range Qualifier set to 5 PM to 9 AM), but not during the weekend (with a Days of Week Qualifier set to Monday through Friday).

## Time Range

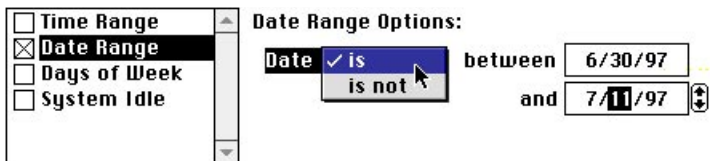
This Qualifier restricts the Trigger to activate only during a selected part of the day. For example, you can use this Qualifier to limit an Event to execute only during (or after) business hours.



To set the starting and ending times, click on the numbers in the boxes, and either type in the desired values or change them with the arrow buttons. You can also use the arrow keys on the keyboard to move between values and change them. If you set the starting time to be later than the ending time, then the Qualifier will be true after the starting time until the ending time the next day.

## Date Range

This Qualifier restricts the Trigger to activate either inside or outside of a specified date range. For example, you can use this Qualifier to limit an Event to execute only during your vacation.



If the “is/is not” pop-up menu is set to “is,” the Qualifier is true between the starting and ending dates. If it is set to “is not,” the Qualifier is true before the starting date, and after the ending date.

To set the starting and ending dates, click on the numbers in the boxes, and either type in the desired values or change them with the arrow buttons. You can also use the arrow keys on the keyboard to move between values and change them.

## Days of Week

This Qualifier restricts the Trigger to activate only on one or more days of the week. For example, you can use this Qualifier to limit an Event to execute only on weekdays.



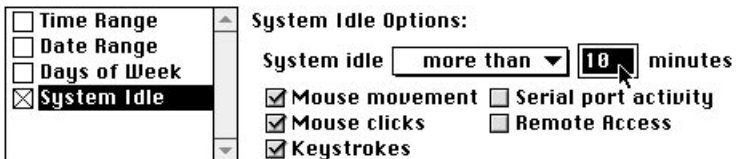
Time Range  
 Date Range  
 Days of Week  
 System Idle

Days of Week Options:  
Days of Week: S M T W T F S

To set the days of the week, click the check boxes corresponding to the desired days.

## System Idle

This Qualifier restricts the Trigger to activate only if the system has been idle for more than (or less than) a chosen amount of time. For example, you can use this Qualifier to limit an Event to execute only when you haven’t used the mouse or keyboard for 20 minutes.



System Idle Options:  
System idle   minutes  
 Mouse movement  Serial port activity  
 Mouse clicks  Remote Access  
 Keystrokes



*This Qualifier is ignored if the computer is turned off when a Trigger activates.*

If the “more than/less than” pop-up menu is set to “more than,” the Qualifier is true when activity *has not* occurred for the chosen period. If it is set to “less than,” the Qualifier is true when activity *has* occurred in the chosen period.

To select the period that is checked for activity, type the desired number of minutes into the text box.

As with the System Idle Trigger, you can customize which types of activities should be monitored. To choose these, check the desired boxes.



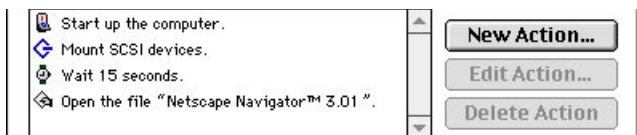
*The “Serial port activity” check box only works with applications that use the Mac’s standard serial driver. It will not be able to detect activity with any program which installs a custom driver. Contact your software manufacturer for more information.*



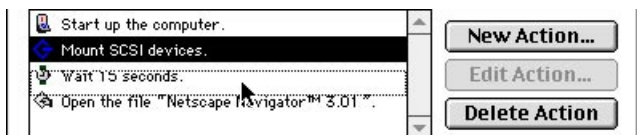
*The “Remote Access” check box only works with Apple Remote Access. If you are using another program, for example Timbuktu, check the “Serial port activity” box instead.*

# Event Actions

When an Event's Trigger activates, the Event will execute its list of Actions, as shown in the scrolling list at the bottom part of the Event Editor. Each Action will be executed in the order it appears in the Action List for the Event.

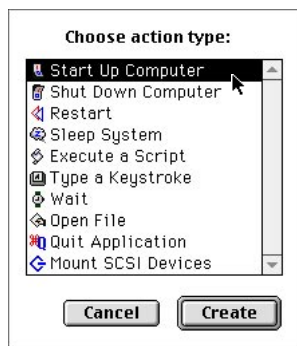


*If you need to move an Action to execute earlier or later, select it in the list and drag it to the desired position.*



To create an Action, click the *New Action...* button below the Action list. A dialog box will appear asking you which type of Action you wish to create.

When you select an Action and click *Create*, a dialog box will appear that allows you to edit the parameters of an Action. Each dialog box is different, and is described below.



*Only Start Up Computer Actions can be executed when the computer is turned off.*

New Actions are added to the end of the Action list, unless an Action is selected, in which case it will be inserted before the selected Action.



## Start Up Computer



This Action turns on PowerKey's outlets and starts up your computer.

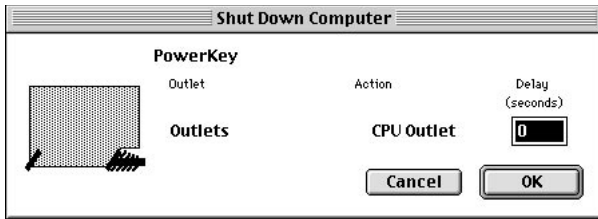


*This Action will automatically execute whenever you press the "Power On" key on your keyboard, even if you haven't created an Event with a "Power On" Key Pressed Trigger.*

## Shut Down Computer



This Action tells your system to shut down, then turns off your computer and peripherals.



If you type a value into the *Delay* field, PowerKey will wait after the system shuts down before turning off its outlets. You can use this to give a device, such as a tape backup drive, time to rewind its tape after the system shuts down.

## Restart



This Action restarts your computer. It operates exactly like the Finder's "Restart" item in the *Special* menu.

## Sleep System



This Action puts your computer to sleep. It operates exactly like the Finder's "Sleep" item in the *Special* menu.



*This Action is only available on computers that have the ability to go to sleep, such as the Power Mac 7500, 8500 and 9500.*



*You can use this Action to automatically put your computer to sleep when you aren't using it. To do this, create an Event with a When System is Idle Trigger. Set the idle time to your desired value, and create a Sleep System Action.*

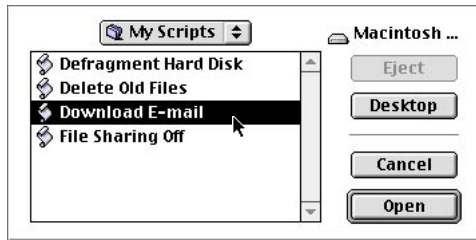
*To wake a sleeping computer, press any key on the keyboard.*

## Execute a Script



This Action executes any OSA-compliant script, such as an AppleScript or UserLand Frontier™ script. You can write scripts to perform just about any task you can imagine.

When you create a Script Action, a standard Open File dialog box will appear. Find your desired script in the scrolling list. Select the script and click *Open* (or double-click on the script) to select it.



*If your script opens a dialog box to display or request information, you will not be able to run it as a compiled script. This is because the PowerKey Extension runs as a background-only application, which cannot draw windows. To run such a script, save it as an "application" in the Script Editor, and run it with the Open File Action.*



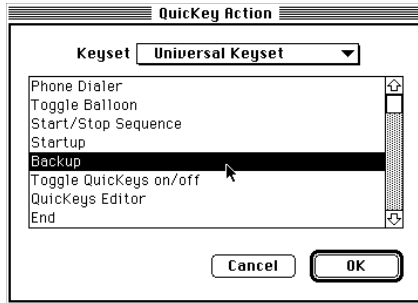
*Script Actions will lose track of a script if you move or rename it in the Finder. You will have to edit the Actions and select the script again.*

## Execute a QuicKey™



This Action activates a QuicKey or Sequence created with CE Software's QuicKeys™. This Action is only available if you have QuicKeys installed in your system. This gives you a simple means to automate many tasks when you don't need a complex script.

When you create a QuicKey Action, a list of your currently defined QuicKeys appears.



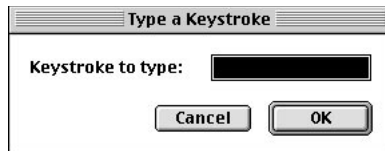
Select the Keyset that contains your QuicKey from the pop-up menu above the list. Select the desired QuicKey from the list and click *OK* (or double-click on the QuicKey).

## Type a Keystroke



This Action “types” a key combination as if you typed it on the keyboard. You can use this Action to do menu commands or type a character for use by any application.

When you create a Keystroke Action, a dialog box appears. Select the text box, and type the desired keystroke.

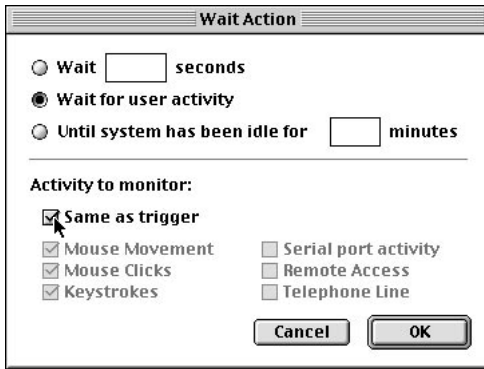


## Wait



This Action serves multiple duty. It can wait a specified number of seconds, or it can wait for the user to start or stop using the computer. You can use this Action to delay subsequent Actions in an Event as desired.

When you create a Wait Action, a dialog box appears.



At the top of the dialog box is a set of radio buttons. Choose which type of wait you wish to perform from this set. Below the dotted line is a series of check boxes.

To wait for a certain period of type, select the *Wait (n) seconds* button. Type the number of seconds into the field.

To wait until for activity to occur on the computer, select the *Wait for user activity* button. You can choose which activities to monitor with the check boxes below.

To wait until activity on the computer stops, select the *Until system has been idle for (n) minutes* button. You can choose which activities to monitor with the check boxes below.



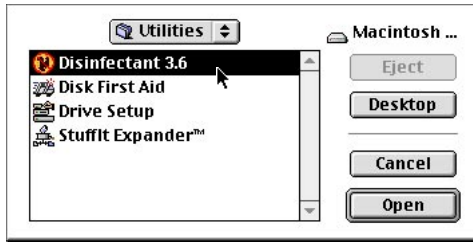
*The Wait for user activity ability is primarily useful in conjunction with a When System Is Idle Trigger. You can check the Same as trigger box to make this Action match its Trigger.*

## Open File



This Action will open any file, as if you double-clicked on it in the Finder. You can use this Action to run applications (including AppleScripts saved as applications) or open documents. This is useful if you wish to start an automated procedure when you're not at your computer.

When you create an Open File Action, a standard Open File dialog box will appear. Find your desired file in the scrolling list. Select the file and click *Open* (or double-click on the file) to select it.



*Open File Actions will lose track of a file if you move or rename it. You will have to edit the Actions and select the file again.*

## Quit Current Application



This Action simply quits the frontmost application. It is designed to complement the Open File Action described above. You can use this with the Open File Action described above to open an application (such as a backup program), then quit when it is finished.



*To ensure that the application you wish to quit is the frontmost application, execute an Open File Action before the Quit Action. If the application is already open, this Action will bring it to the front.*

## Mount SCSI Devices



This Action looks at your SCSI bus and mounts all devices it can find. You can use this Action to mount hard disks that need time to “spin up” when they are turned on, and are not ready when the computer first starts up.

## External Actions



PowerKey allows programmers to create their own Action types to perform any special task they need. External Actions appear at the bottom of the list of choices when you click on *New Action...*

When you create an External Action, a dialog box appears. External Actions can receive one parameter, a line of text. Enter the text, if any, and click *OK*.



External Actions are simply miniature programs that perform any task you wish to write. To add an External Action to the *New Action...* list, place it in the PowerKey Folder in the Preferences folder of your System Folder.

The PowerKey Pro software disk contains information on writing your own External Actions.

# Appendices

1. Default Schedules	56
Creating a Default Schedule File	56
Using a Default Schedule File	57
2. Troubleshooting	58
3. How To Reach Us	60
Index	61

# Appendix 1

## Default Schedules

Sometimes a system administrator must set up multiple computers with a single “canned” system. Importing Schedules on each computer in these instances is impractical, and since the PowerKey software manages schedules by serial numbers, simply copying preference files will not work.

To solve this problem, the PowerKey software will look for and recognize a “default” Schedule file when it first runs on a computer. It will copy the Events and Hardware Setup information from this file when it sets up the Schedule for the connected unit.

### Creating a Default Schedule File

1. Install PowerKey normally on one Mac.
2. Set the Hardware Setup options for the systems you plan to use with your default Schedule file.
3. Create (or import) the Events you wish to include in the default Schedule file.
4. Quit the PowerKey Editor and open the PowerKey Folder in your system’s Preferences folder.
5. Locate the Schedule file. This file will be named “Schedule\_xxx”, where xxx varies depending on the model of PowerKey installed. For PowerKey Pro, this file’s name will end with the serial number of your unit.
6. Duplicate this file, and rename it either:  
    “PowerKey Classic Default”,  
    “PowerKey Pro 200 Default”, or  
    “PowerKey Pro 600 Default”  
depending on the model of PowerKey you created the default Schedule with.



## Using a Default Schedule File

To set up a “canned” system folder with the PowerKey software, follow these steps:

1. Place the PowerKey Extension in the Extensions folder of your system.
2. If you wish to allow editing of your Schedule, place the PowerKey Editor in the Apple Menu Items folder.
3. Create a folder entitled “PowerKey Folder” in the Preferences folder.
4. Place your default Schedule file in the PowerKey Folder.



*If you're not sure which model of PowerKey will be connected to a computer using your canned system, you can place a default Schedule file for each model in the PowerKey Folder. The PowerKey Extension will automatically copy the default Schedule for the model it finds connected to the computer.*

# Appendix 2

## Troubleshooting

This section answers the most common questions that can arise during installation. Because PowerKey is so flexible, we can't address all the possible issues in this space. However, we have a technical support database online. If you don't find a solution here, you can find this database on our site on the World Wide Web, at <http://www.sophisticated.com/>. See Appendix 3, *How to Reach Us*, for more information.

### *PowerKey won't start up my system.*

- Make sure your keyboard cable is correctly plugged into the short branching connector of the PowerKey ADB Cable, as described in Chapter 2, *Connecting the ADB Cables*.
- Make sure the PowerKey ADB Cable is correctly plugged into the computer and the PowerKey unit, as described in Chapter 2, *Connecting the ADB Cables*.
- Make sure the equipment's power switches are turned on.

### *My computer clicks or pauses when I start up.*

*I have to press the "Power On" key twice to start up.*

*My computer's clock stops when I shut it down.*

- Your Mac probably has Soft Power, and you've plugged it into one of the outlets on your PowerKey. Refer to Chapter 2, *Preparing for Installation*, to determine how to connect your computer.

### *My StyleWriter or other peripheral doesn't turn on when I turn on its outlet.*

- Some devices, such as the StyleWriter, have a "soft" power switch, which means interrupting the power to the printer makes the switch forget it was turned on. You can either turn the StyleWriter on by hand, or plug its power cord into the wall and leave it turned on.

*The PowerKey Extension icon appears with an “X” in it when my computer starts up.*

- Make sure PowerKey is correctly connected to the computer’s ADB port, and that the cable is making good contact.
- Make sure another extension isn’t interfering with the PowerKey Extension. Try putting a space or a ‘z’ in front of the name “PowerKey Extension” to make it load earlier or later in the startup process.

*The system doesn’t turn off when I select “Shut Down”.*

- Make sure the PowerKey Extension is loading at startup, and hasn’t been disabled by a startup controller utility.
- Check your Schedule with the PowerKey Editor. Make sure you have an Event with an At Shut Down Trigger, and that it includes a Shut Down Computer Action.
- Temporarily disable any extensions which perform tasks at shut down, such as hard disk protection utilities, to see if the problem goes away. Once you’ve isolated the conflicting extension, contact the manufacturer to see if an updated version is available.

*I get an error message when I try to open the PowerKey Editor on my Power Mac.*

- Make sure that the system file “ObjectSupportLib” is in the Extensions folder of your system, and hasn’t been disabled by a startup controller utility.

*I can’t execute an AppleScript with a PowerKey Event, but it works fine if I double-click on it.*

- Your script may attempt to display a window on the screen, which can’t be done from a background-only application (like the PowerKey Extension). Open your script in the Script Editor, and save it as an application. Then use the Open File Action to execute it instead of an Execute Script Action.

# Appendix 3

## How To Reach Us

### **Sophisticated Circuits, Inc.**

18618 129th Ave NE

PO Box 727

Bothell, WA 98041-0727

#### Phone:

Voice: 425-485-7979

Fax: 425-485-7172

#### Internet:

Web: <http://www.sophisticated.com/>

FTP: <ftp://ftp.sophisticated.com/>

e-mail:

[sales@sophisticated.com](mailto:sales@sophisticated.com),

[support@sophisticated.com](mailto:support@sophisticated.com)

# Index

## A

- Actions 17, 19, 48
  - changing order 38, 48
  - creating 22, 48
  - editing 38
- Action list 38, 48
- Action types
  - Execute QuickKey 51
  - Execute Script 50, 59
  - Externals 28, 54
  - Keystroke 51
  - Mount SCSI Devices 53
  - Open File 53, 59
  - Quit Application 53
  - Restart 49
  - Shut Down Computer 24, 49
  - Sleep System 50
  - Start Up Computer 22, 49
  - Wait 52

- ADB 7
- ADB Cable 11
  - branching connector 11
- ADB port 10, 11
- Address 60
- Apple Remote Access 43, 47
- AppleScript 28, 50, 59

## C

- “Classic” PowerKey. *See* PowerKey
- Clock stops 58

## D

- Default Schedule files 56

## E

- E-mail address 60
- Edit Menu 30
- Editor menus 30
- Events 17, 18
  - creating 20
  - disabling 31
  - naming 20, 37
- Event Actions. *See* Actions
- Event buttons 29, 38
- Event Editor 19, 20, 37
- Event Triggers. *See* Triggers
- Extras 28

## F

- FCC Statement 2
- File Menu 30
- Frontier 50

## H

- Hard Power 10, 11
- Hardware Setup dialog box 35

## I

- Installation 9
  - ADB cables 11
  - Hardware 10
  - Power cords 10
  - Software 13
- Internet 60
- Introduction 7

## M

### Menus

- Edit 30
- File 30
- Schedule 31
- Trigger 37

## P

Power failures. *See* Trigger

Types: Power Returns

- “Power On” key 10, 16, 43, 58
- PowerKey Editor 18, 28, 29, 59
- PowerKey Extension 28, 59
- PowerKey Extras folder 28
- PowerKey Folder 28
- PowerKey Preferences 28
- PowerPC 7
- Preferences 36

## Q

- Qualifiers 17, 44
- Qualifier Editor 24, 38, 44
- Qualifier types
  - Date Range 45
  - Days of Week 46
  - System Idle 46
    - Remote Access 47
    - Serial port activity 47
  - Time Range 24, 45
- QuicKeys 51

## R

- Replace Existing Schedule check box 33
- Retrospect 28

## S

- Safety Instructions 2
- Schedule Menu 31
- Scheduled Events. *See* Events
- Schedules 17, 18
  - exporting 33
  - importing 33
  - Schedule files 28
  - Schedule windows 18, 29
- Selected Events Only check box 34
- Serial number 35
- Show startup icon check box 36
- Shutting down 16, 59
  - Warning before 36
- Soft Power 10, 11, 58
- Software License 64
- Spin triangles 18, 29
- Starting up 16
- StyleWriter 58
- System Requirements 7

## T

- Technical info 35
- Timbuktu 43, 47
- Triggers 17, 18, 39
  - English description 18, 21, 37, 44
  - System Triggers 37, 42
  - Time Triggers 37, 39
- Trigger Menu 21, 37
- Trigger Qualifiers. *See* Qualifiers
- Trigger types 21
  - At Shut Down 43
  - Day of Month 40
  - Days of Week 21, 40
  - Once Only 39
  - “Power On” Key Pressed 42
  - Repeating 39
  - When Hot Key Pressed 42
  - When System Is Idle 23, 43, 52
    - Remote Access 43
    - Serial port activity 43
- Troubleshooting 58

## U

- Unit Name 35

## W

- Warn before scheduled Shut Down check box 36
- Warranty 65
- World Wide Web 58, 60

## PowerKey Software License

PLEASE READ THIS DOCUMENT CAREFULLY BEFORE USING THE SOFTWARE. BY USING THE SOFTWARE, YOU ARE AGREEING TO BE BOUND BY THE TERMS OF THIS LICENSE. IF YOU DO NOT AGREE TO THE TERMS OF THIS LICENSE, PROMPTLY RETURN THE UNUSED SOFTWARE TO THE PLACE WHERE YOU OBTAINED IT.

1. License. The enclosed system software (the "Software") and related documentation are licensed to you by Sophisticated Circuits, Inc. ("SCI"). You own the disk on which the Software is recorded but SCI retains title to the Software. This License allows you to use the Software on a single computer and make one copy of the Software in machine-readable form for backup purposes only. You must reproduce on such copy the SCI copyright notice and any other proprietary legends that were on the original copy of the Software. You may also transfer the Software, the backup copy of the Software, the related documentation and a copy of this License to another party, provided the other party reads and agrees to accept the terms and conditions of this License.
2. Restrictions. The Software contains copyrighted material, trade secrets and other proprietary material and in order to protect them you may not decompile, reverse engineer, disassemble or otherwise reduce the Software to a human-perceivable form. You may not modify, network, rent, lease, loan, sell, distribute or create derivative works based upon the Software in whole or in part. You may not electronically transfer the Software from one computer to another over a network.
3. Termination. This License is effective until terminated. You may terminate this License at any time by destroying the Software and all copies thereof. This License will terminate immediately without notice from SCI if you fail to comply with any provision of this License. Upon termination you must destroy the Software and all copies thereof.
4. Export Law Assurances. You agree and certify that neither the Software nor any other technical data received from SCI, nor the direct product thereof, will be exported outside the United States except as authorized in advance by SCI, in writing, and as permitted by the laws and regulations of the United States.
5. Government End Users. (a) If this Software is acquired by or on behalf of a unit or agency of the United States Government this provision applies. This Software: (i) was developed at private expense, and no part of it was developed with government funds; (ii) is a trade secret of SCI for all purposes of the Freedom of Information Act; (iii) is "commercial computer software" subject to limited utilization as provided in the contract between the vendor and the governmental entity; and (iv) in all respects is proprietary data belonging solely to SCI. (b) For units of the Department of Defense (DDO), this Software is sold only with "Restricted Rights" as that term is defined in the DOD Supplement to the Federal Acquisition Regulations ("DFARS") 52.227-7013 (c) (1) (ii) and use, duplication or disclosure is subject to restrictions as set forth in subparagraph (c) (1) (ii) of the Rights in Technical Data and Computer Software clause at DFARS 52.227-7013. Manufacturer: Sophisticated Circuits, Inc., PO Box 727, Bothell, WA 98041-0727. (c) If this Software was acquired under a GSA Schedule, the Government has agreed: (i) to refrain from changing or removing any insignia or lettering from the Software that is provided or from producing copies of manuals or disks (except one copy for backup purposes); (ii) title to and ownership of this Software and any reproductions thereof shall remain with SCI; (iii) use of this Software shall be limited to the facility for which it is acquired; and (iv) if use of the Software is discontinued at the installation specified in the purchase/delivery order and the Government desires to use it at another location, it may do so by giving prior written notice to SCI, specifying the type of computer and new location site. (d) Government personnel using this SCI Software, other than under a DOD contract or GSA Schedule, are hereby on notice that use of this Software is subject to restrictions which are the same as, or similar to, those specified above.
6. Disclaimer of Warranty on Software. You expressly acknowledge and agree that use of the Software is at your sole risk. The Software and related documentation are provided "AS IS" and without warranty of any kind and SCI EXPRESSLY DISCLAIMS ALL WARRANTIES, EXPRESS OR IMPLIED, INCLUDING, BUT NOT LIMITED TO, THE IMPLIED WARRANTIES OF MERCHANTABILITY AND FITNESS FOR A PARTICULAR PURPOSE. SCI DOES NOT WARRANT THAT THE FUNCTIONS CONTAINED IN THE SOFTWARE WILL MEET YOUR REQUIREMENTS, OR THAT THE OPERATION OF THE SOFTWARE WILL BE UNINTERRUPTED OR ERROR-FREE, OR THAT DEFECTS IN THE SOFTWARE WILL BE CORRECTED. FURTHERMORE, SCI DOES NOT WARRANT OR MAKE ANY REPRESENTATIONS REGARDING THE USE OR THE RESULTS OF THE USE OF THE SOFTWARE OR RELATED DOCUMENTATION IN TERMS OF THEIR CORRECTNESS, ACCURACY, RELIABILITY, OR OTHERWISE. NO ORAL OR WRITTEN INFORMATION OR ADVICE GIVEN BY SCI OR AN SCI AUTHORIZED REPRESENTATIVE SHALL CREATE A WARRANTY OR IN ANY WAY INCREASE THE SCOPE OF THIS WARRANTY. SHOULD THE SOFTWARE PROVE DEFECTIVE, YOU (AND NOT SCI OR AN SCI AUTHORIZED REPRESENTATIVE) ASSUME THE ENTIRE COST OF ALL NECESSARY SERVICING, REPAIR OR CORRECTION. SOME STATES DO NOT ALLOW THE EXCLUSION OF IMPLIED WARRANTIES, SO THE ABOVE EXCLUSION MAY NOT APPLY TO YOU.
7. Limitation of Liability. UNDER NO CIRCUMSTANCES INCLUDING NEGLIGENCE, SHALL SCI BE LIABLE FOR ANY INCIDENTAL, SPECIAL OR CONSEQUENTIAL DAMAGES THAT RESULT FROM THE USE OR INABILITY TO USE THE SOFTWARE OR RELATED DOCUMENTATION, EVEN IF SCI OR AN SCI AUTHORIZED REPRESENTATIVE HAS BEEN ADVISED OF THE POSSIBILITY OF SUCH DAMAGES. SOME STATES DO NOT ALLOW THE LIMITATION OR EXCLUSION OF LIABILITY FOR INCIDENTAL OR CONSEQUENTIAL DAMAGES SO THE ABOVE LIMITATION OR EXCLUSION MAY NOT APPLY TO YOU. In no event shall SCI's total liability to you for all damages, losses, and causes of action (whether in contract, tort (including negligence) or otherwise) exceed the amount paid by you for the Software.
8. Controlling Law and Severability. This License shall be governed by and construed in accordance with the laws of the State of Washington, except that body of Washington law concerning conflicts of law. If for any reason a court of competent jurisdiction finds any provision of this License, or portion thereof, to be unenforceable, that provision of the License shall be enforced to the maximum extent permissible so as to effect the intent of the parties, and the remainder of this License shall continue in full force and effect.
9. Complete Agreement. This License constitutes the entire agreement between the parties with respect to the use of the Software and related documentation, and supersedes all prior or contemporaneous understandings or agreements, written or oral, regarding such subject matter.

©1990-96 Sophisticated Circuits, Inc., PO Box 727, Bothell, WA 98041-0727. 425-485-7979



## Limited Warranty

SOPHISTICATED CIRCUITS, INC. warrants the PowerKey Pro unit to be free from defects in materials and workmanship for a period of ONE (1) YEAR from the date of original retail purchase. During this period, if a defect should occur, Sophisticated Circuits will, at its option, repair or replace the unit at no charge to you, provided it is returned during the warranty period to Sophisticated Circuits or one of its authorized dealers. This warranty does not apply if the unit has been damaged by accident or abuse, has been modified without the written permission of Sophisticated Circuits, or if the serial number has been removed or defaced. There are no other warranties express or implied. Sophisticated Circuits accepts no responsibility for consequential damages, including but not limited to loss of profits or benefits.

## Apple System Software Labelling

APPLE COMPUTER, INC. ("APPLE") MAKES NO WARRANTIES, EXPRESS OR IMPLIED, INCLUDING WITHOUT LIMITATION THE IMPLIED WARRANTIES OF MERCHANTABILITY AND FITNESS FOR A PARTICULAR PURPOSE, REGARDING THE APPLE SOFTWARE. APPLE DOES NOT WARRANT, GUARANTEE OR MAKE ANY REPRESENTATIONS REGARDING THE USE OR THE RESULTS OF THE USE OF THE APPLE SOFTWARE IN TERMS OF ITS CORRECTNESS, ACCURACY, RELIABILITY, CURRENTNESS OR OTHERWISE. THE ENTIRE RISK AS TO THE RESULTS AND PERFORMANCE OF THE APPLE SOFTWARE IS ASSUMED BY YOU. THE EXCLUSION OF IMPLIED WARRANTIES IS NOT PERMITTED BY SOME STATES. THE ABOVE EXCLUSION MAY NOT APPLY TO YOU.

IN NO EVENT WILL APPLE, ITS DIRECTORS, OFFICERS, EMPLOYEES OR AGENTS BE LIABLE TO YOU FOR ANY CONSEQUENTIAL, INCIDENTAL OR INDIRECT DAMAGES (INCLUDING DAMAGES FOR LOSS OF BUSINESS PROFITS, BUSINESS INTERRUPTION, LOSS OF BUSINESS INFORMATION, AND THE LIKE) ARISING OUT OF THE USE OR INABILITY TO USE THE APPLE SOFTWARE EVEN IF APPLE HAS BEEN ADVISED OF THE POSSIBILITY OF SUCH DAMAGES. BECAUSE SOME STATES DO NOT ALLOW THE EXCLUSION OR LIMITATION OF LIABILITY FOR CONSEQUENTIAL OR INCIDENTAL DAMAGES, THE ABOVE LIMITATIONS MAY NOT APPLY TO YOU. Apple's liability to you for actual damages from any cause whatsoever, and regardless of the form of the action (whether in contract, tort (including negligence), product liability or otherwise), will be limited to \$50.

